

**INSTRUMENT
APPROACH
CHART - ICAO**

AERODROME ELEV 119 ft
HEIGHTS RELATED TO
THR RWY 07 - ELEV 87 ft

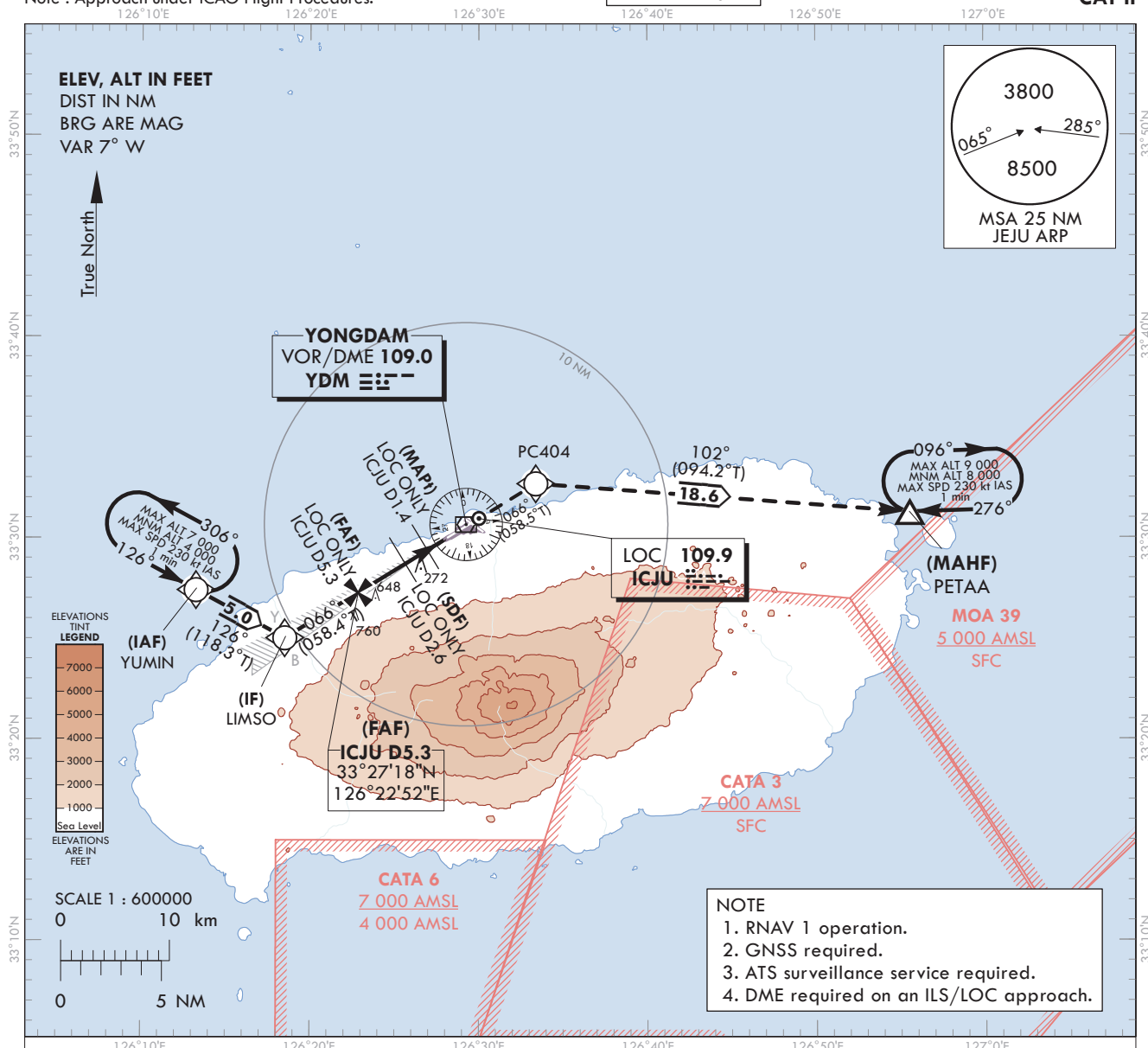
JEJU APP 121.2
JEJU TWR 124.05
JEJU TWR 118.55
118.2

JEJU/Jeju Intl(RKPC)

ILS Z or LOC Z RWY 07

CAT II

Note : Approach under ICAO Flight Procedures.

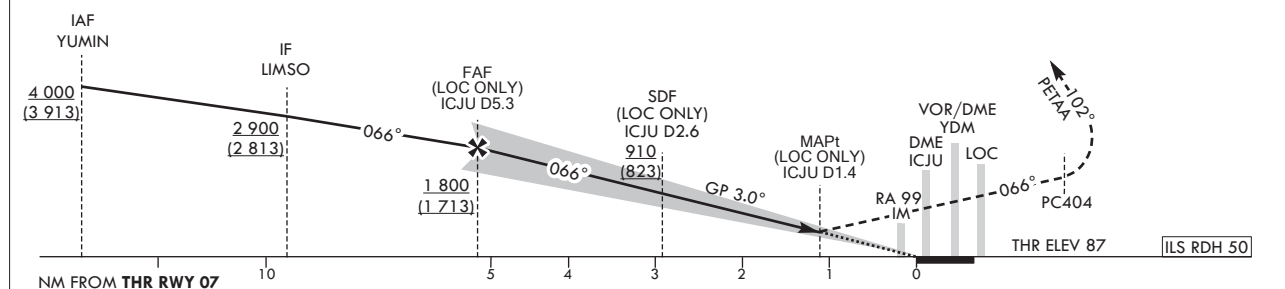


RECOMMENDED PROFILE(LOC ONLY)	DME ICJU	5	4	3	2	1.4
Final Approach Gradient 5.32%, 323 ft/NM	ALT(HGT)	1 690 (1 603)	1 367 (1 280)	1 044 (957)	721 (634)	530 (443)

MISSED APPROACH

Climb to 8 000 ft on track of 066° to PC404, then RIGHT turn on track of 102° to PETAA and hold at 8 000 ft.

TRANSITION ALT 14 000
TRANSITION LVL FL 140



CATEGORY			DA(DH)/ MDA(MDH)	A	B	C	D	DL
STA	CAT-1	FULL	287 (200)	RVR 550 m, VIS 800 m				
		ALS INOP		1 200 m				
	LOC	FULL	530 (443)	1 600 m				
		ALS INOP		2 300 m				
	CAT-II		187(100)	300 m			300 m ¹⁾ / 350 m	

Knots	60	90	120	150	180
Rate of descent V/V fpm	318	478	637	796	955

1) For CAT D/DL aeroplane conducting an autoland.
* Timing Not authorized for defining MAPt.
* Circling Not authorized.

Change : Improved clarity such as terrain.

JEJU/Jeju Intl(RKPC)
ILS Z or LOC Z RWY 07
CAT II

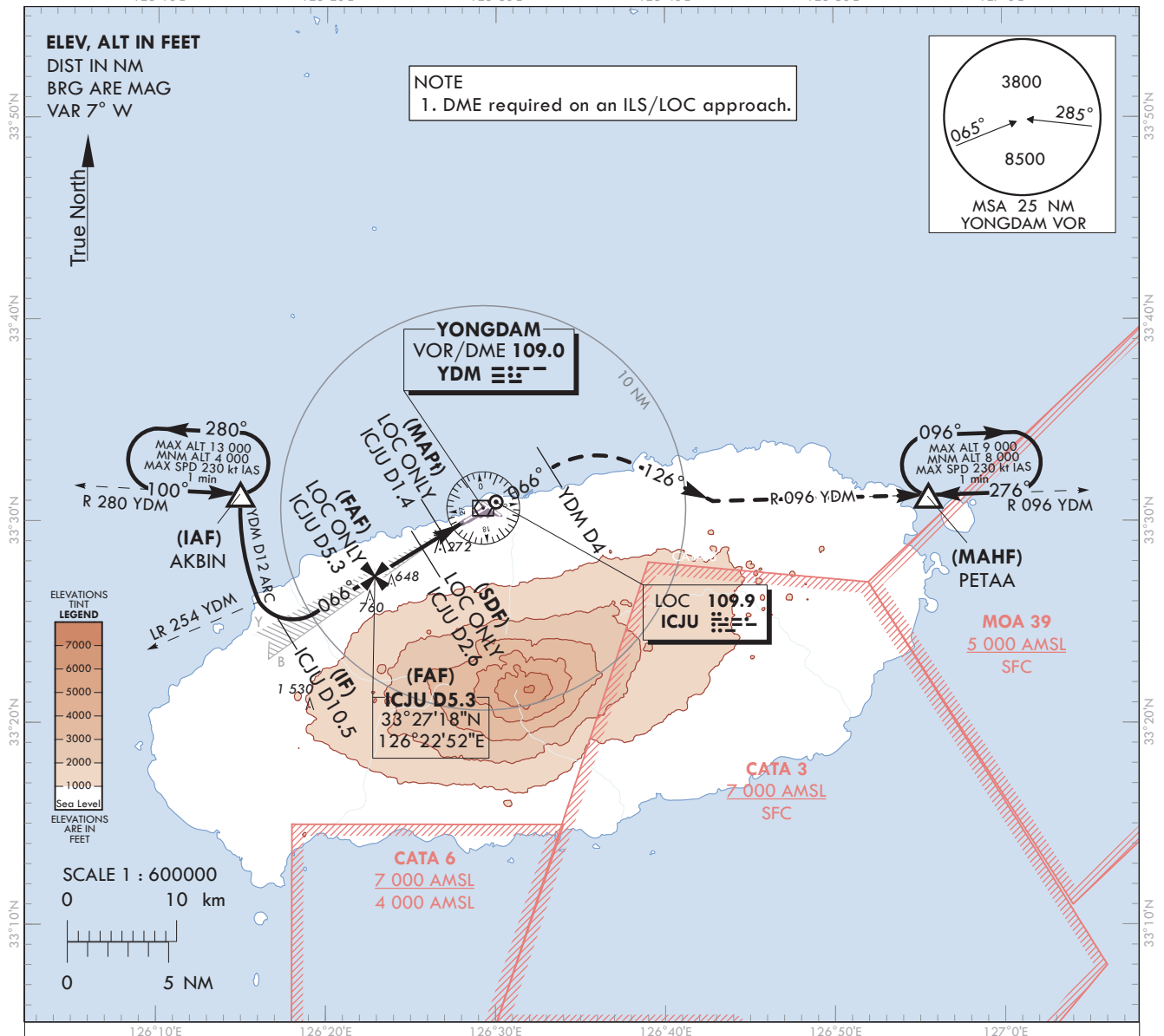
AERONAUTICAL DATA TABULATION

ILS Z or LOC Z Approach to RWY 07 from YUMIN(IAF)		
Fix/point		Coordinates
YUMIN(IAF)		33°27'25.7"N 126°13'15.5"E
LIMSO(IF)		33°25'03.0"N 126°18'31.0"E
D5.3 ICJU(FAF LOC only)	BRG 65.82°/5.34 NM ICJU	33°27'17.6"N 126°22'51.8"E
D2.6 ICJU(SDF LOC only)	BRG 65.82°/2.60 NM ICJU	33°28'43.8"N 126°25'39.3"E
D1.4 ICJU(MAPt LOC only)	BRG 65.82°/1.40 NM ICJU	33°29'21.6"N 126°26'52.7"E
THR RWY 07		33°29'59.57"N 126°28'06.50"E
DME ICJU		33°30'09.0"N 126°28'15.7"E
PC404		33°32'42.3"N 126°33'23.4"E
PETAA(MAHF)		33°31'18.0"N 126°55'34.0"E

JEJU	APP	121.2
		124.05
JEJU	TWR	118.55
		118.2

JEJU/Jeju Intl(RKPC)
ILS Y or LOC Y RWY 07
CAT II

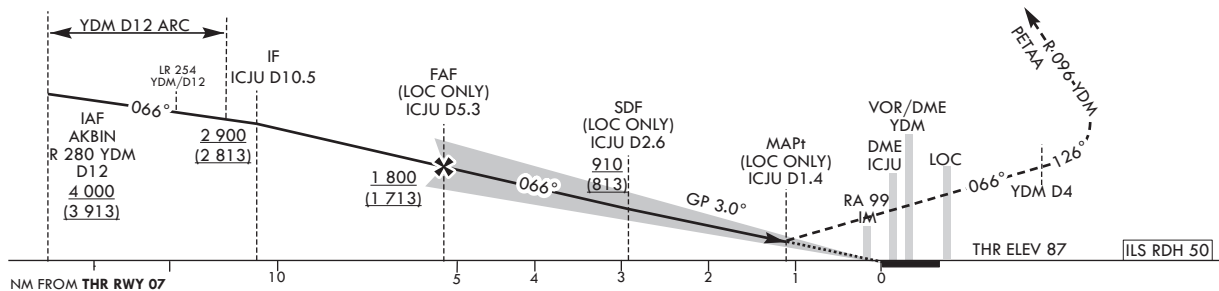
126°10'E 126°20'E 126°30'E 126°40'E 126°50'E 127°0'E



RECOMMENDED PROFILE(LOC ONLY)	DME ICJU	5	4	3	2	1.4	MISSED APPROACH Climb straight ahead untill YDM D4 then RIGHT turn to Intercept R 096 YDM to PETAA and Hold at 8 000 ft.
Final Approach Gradient 5.32%, 323 ft/NM	ALT(HGT)	1 690 (1 603)	1 367 (1 280)	1 044 (957)	721 (634)	530 (443)	

NOTE

1. Missed approach turn limited to maximum of 230 kt IAS.



CATEGORY			DA(DH)/ MDA(MDH)	A	B	C	D	DL							
STA	CAT-1	FULL	287	RVR 550 m, VIS 800 m					Rate of descent	Knots	60	90	120	150	180
		ALS INOP	(200)	1 200 m						V/V fpm	318	478	637	796	955
	LOC	FULL	530	1 600 m					1) For CAT D/DL aeroplane conducting an autoland. * Timing Not authorized for defining MAPt. * Circling Not authorized.						
		ALS INOP	(443)	2 300 m											
		CAT- II		187(100)	300 m			300 m ¹⁾ /350 m							

Change : Improved clarity such as terrain.

JEJU/Jeju Intl(RKPC)
ILS Y or LOC Y RWY 07
CAT II

AERONAUTICAL DATA TABULATION

ILS Y or LOC Y Approach to RWY 07 from AKBIN(IAF)		
Fix/point		Coordinates
AKBIN(IAF)	- 12 DME ARC /12.00 NM YDM	33°31'21.5"N 126°14'55.3"E
D10.5 ICJU(IF)	- BRG 65.82°/10.50 NM ICJU	33°24'35.0"N 126°17'36.8"E
D5.3 ICJU(FAF LOC only)	- BRG 65.82°/5.34 NM ICJU	33°27'17.6"N 126°22'51.8"E
D2.6 ICJU(SDF LOC only)	- BRG 65.82°/2.60 NM ICJU	33°28'43.8"N 126°25'39.3"E
D1.4 ICJU(MAPt LOC only)	- BRG 65.82°/1.40 NM ICJU	33°29'21.6"N 126°26'52.7"E
THR RWY 07		33°29'59.57"N 126°28'06.50"E
DME ICJU		33°30'09.0"N 126°28'15.7"E
YDM VOR/DME		33°30'41.3"N 126°29'15.3"E
D4.0 YDM	- BRG 65.87°/4.00 NM YDM	33°32'42.4"N 126°33'23.4"E
PETAA	- BRG 95.70°/22.00 NM YDM	33°31'18.0"N 126°55'34.0"E

**INSTRUMENT
APPROACH
CHART - ICAO**

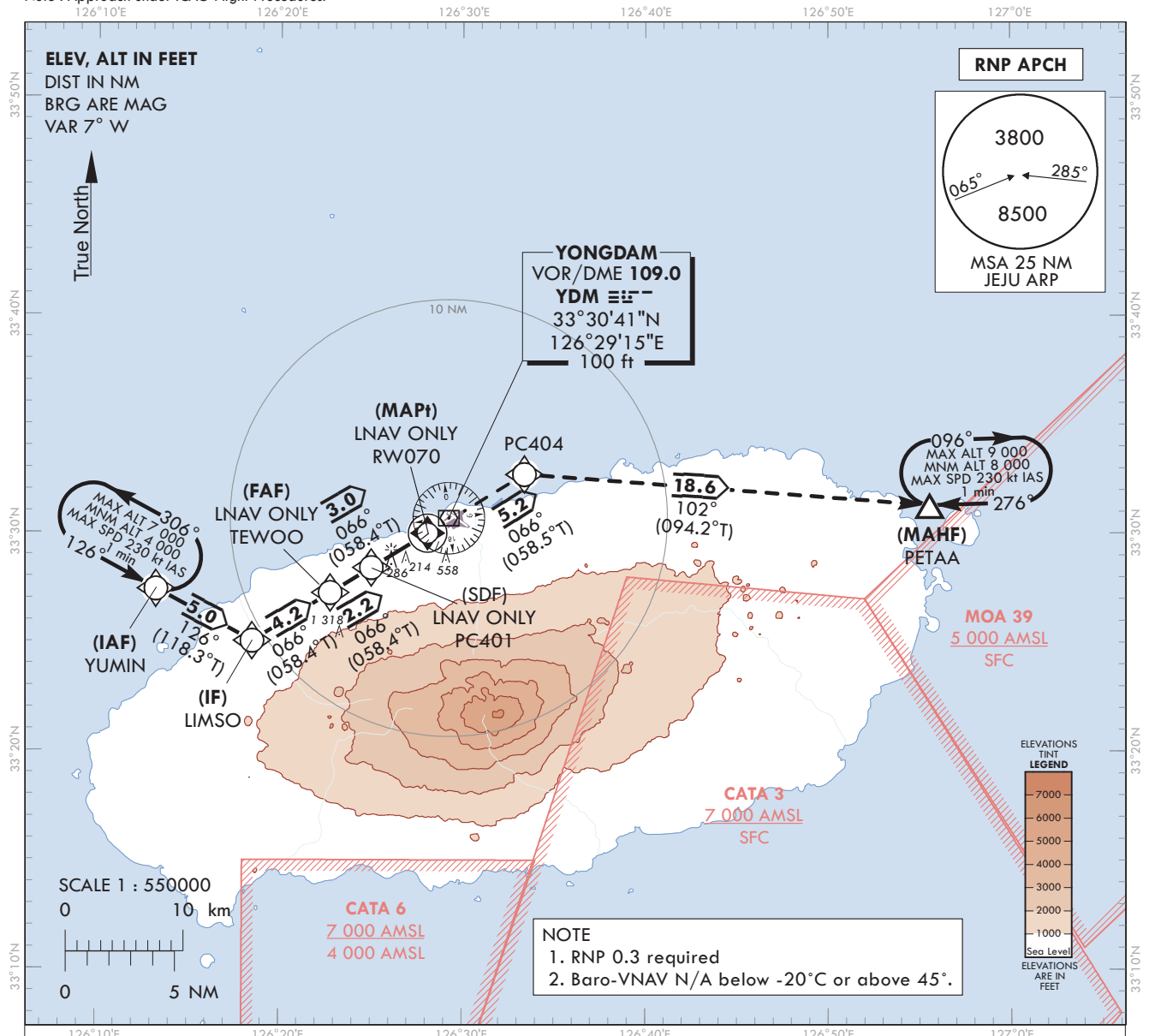
AERODROME ELEV 119 ft
HEIGHTS RELATED TO
THR RWY 07 - ELEV 87 ft

JEJU APP 121.2
JEJU TWR 124.05
118.55
118.2

JEJU/Jeju Intl(RKPC)

RNP RWY 07

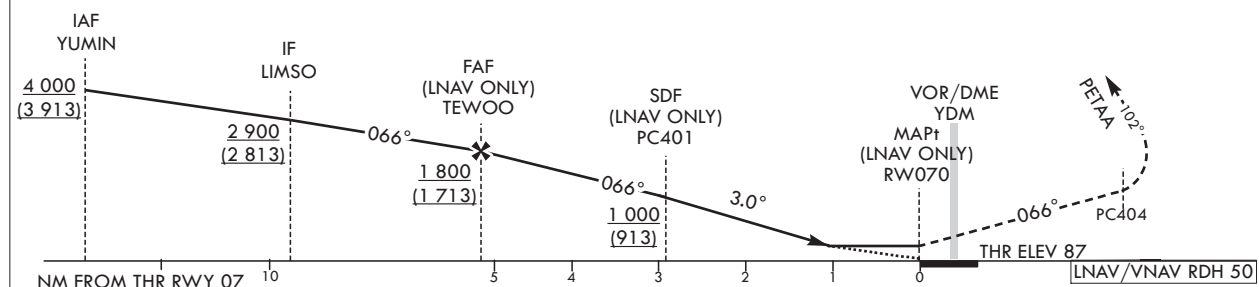
Note : Approach under ICAO Flight Procedures.



TRANSITION ALT 14 000
TRANSITION LVL FL 140

MISSED APPROACH

Climb to 8 000 ft on track of 066° to PC404, then RIGHT turn on track of 102° to PETAA and Hold at 8 000 ft.



CATEGORY			DA(H)/MDA(H)	A	B	C	D							
STA	LNAV/ VNAV	FULL	560	1 500 m				Rate of descent	Knots	60	90	120	150	180
		ALS INOP	(473)	2 200 m					V/V fpm	318	478	637	796	955
	LNAV	FULL	640	1 800 m				* Timing Not authorized for defining MAPt. * Circling Not authorized.						
		ALS INOP	(553)	2 500 m										

* Timing Not authorized for defining MAPt.
* Circling Not authorized.

Change : Improved clarity such as terrain.

AERONAUTICAL DATA TABULATION

Instrument Approach Procedure Coding Tables

RNP RWY 07

Serial Number	Path Descriptor	Waypoint Identifier	Fly-over	Course/Track °M(°T)	Distance (NM)	Turn direction	Altitude (ft)	Speed (kt)	Coordinates	VPA/ TCH	Navigation specification	Remarks
001	IF	YUMIN	-	-	-	-	+4 000	-	33°27'25.7"N 126°13'15.5"E	-	RNP APCH	IAF
002	TF	LMSO	-	126(118.3)	5.0	-	+2 900	-	33°25'03.0"N 126°18'31.0"E	-	RNP APCH	IF
003	TF	TEWOO	-	066(058.4)	4.2	-	+1 800	-	33°27'15.3"N 126°22'47.5"E	-	RNP APCH	FAF
004	TF	PC401	-	066(058.4)	2.2	-	+1 000	-	33°28'24.5"N 126°25'01.8"E	-	RNP APCH	SDF
005	TF	RW070	Y	066(058.4)	3.0	-	+640	-	33°29'59.6"N 126°28'06.5"E	-3.00/50	RNP APCH	MAPt
006	TF	PC404	-	066(058.5)	5.2	-	-	-	33°32'42.3"N 126°33'23.4"E	-	RNP APCH	-
007	TF	PETAA	Y	102(094.2)	18.6	-	-	-	33°31'18.0"N 126°55'34.0"E	-	RNP APCH	-
008	HM	PETAA	Y	276(268.2)	-	R	-9 000 +8 000	-230	33°31'18.0"N 126°55'34.0"E	-	RNP APCH	1 min (Outbound timing)

HOLDING PROCEDURE

Holding Identification	Path Descriptor	Waypoint Identifier	Fly-over	Course/Track °M(°T)	Time (min)	Turn direction	Altitude (ft)	Speed (kt)	Coordinates	VPA/ TCH	Navigation specification	Remarks
RNP RWY 07	HM	YUMIN	Y	126(118.3)	1.0	L	-7 000 +4 000	-230	33°27'25.7"N 126°13'15.5"E	-	RNAV 1	-

**INSTRUMENT
APPROACH
CHART - ICAO**

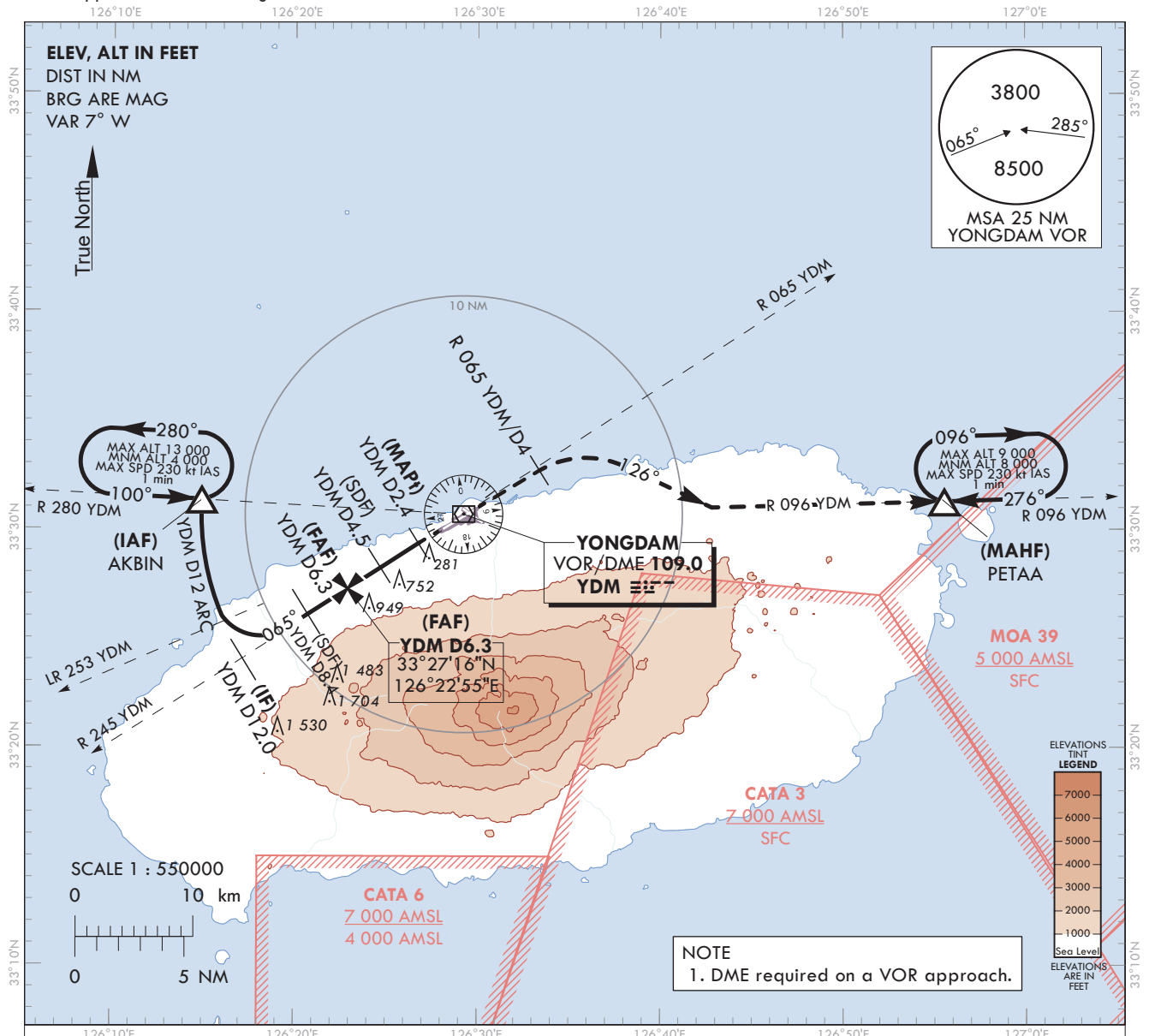
AERODROME ELEV 119 ft
HEIGHTS RELATED TO
THR RWY 07 - ELEV 87 ft

JEJU APP	121.2
JEJU TWR	124.05
	118.55
	118.2

JEJU/Intl(RKPC)

VOR RWY 07

Note : Approach under ICAO Flight Procedures.

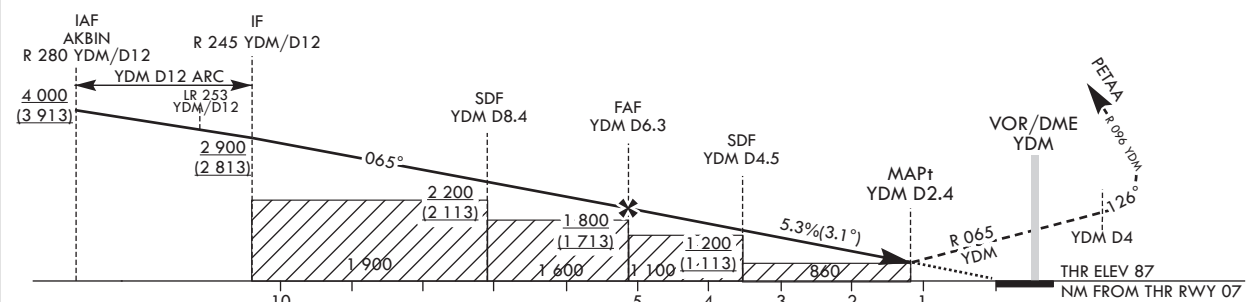


RECOMMENDED PROFILE	DME YDM	6	5	4	3.4
Final Approach Gradient 5.3%, 325 ft/NM	ALT(HGT)	1 702 (1 615)	1 377 (1 290)	1 052 (965)	860 (773)

MISSED APPROACH

Climb on R 065 YDM until 4 DME, then Right turn to intercept R 096 YDM to PETAA and Hold at 8 000 ft.

TRANSITION ALT 14 000
TRANSITION LVL FL 140



CATEGORY	MDA/(MDH)	A	B	C	D
STA	FULL	860 (773)	2 900 m		
	ALS INOP		3 600 m		

* Timing Not authorized for defining MAPt.
* Circling Not authorized.

Change : Improved clarity such as terrain.

JEJU/Intl(RKPC)
VOR RWY 07

AERONAUTICAL DATA TABULATION

VOR Approach to RWY 07 from AKBIN(IAF)		
	Fix/point	Coordinates
AKBIN(IAF)	- 12 DME ARC /12.00 NM YDM	33°31'21.5"N 126°14'55.3"E
D12.0 YDM(IF)	- BRG 64.55°/12.00 NM YDM	33°24'10.5"N 126°17'12.1"E
D8.4 YDM(SDF)	- BRG 64.58°/8.40 NM YDM	33°26'07.9"N 126°20'48.9"E
D6.3 YDM(FAF)	- BRG 64.60°/6.30 NM YDM	33°27'16.3"N 126°22'55.4"E
D4.5 YDM(SDF)	- BRG 64.62°/4.50 NM YDM	33°28'14.9"N 126°24'43.9"E
D2.4 YDM(MAPt)	- BRG 64.63°/2.40 NM YDM	33°29'23.3"N 126°26'50.6"E
THR RWY 07	Final approach descent angle 3.14°(FAF - SDF) / 3.02°(SDF - THR)	33°29'59.57"N 126°28'06.50"E
YDM VOR/DME		33°30'41.3"N 126°29'15.3"E
D4.0 YDM	- BRG 64.66°/4.00 NM YDM	33°32'51.3"N 126°33'16.9"E
PETAA	- BRG 95.70°/22.00 NM YDM	33°31'18.0"N 126°55'34.0"E

**INSTRUMENT
APPROACH
CHART - ICAO**

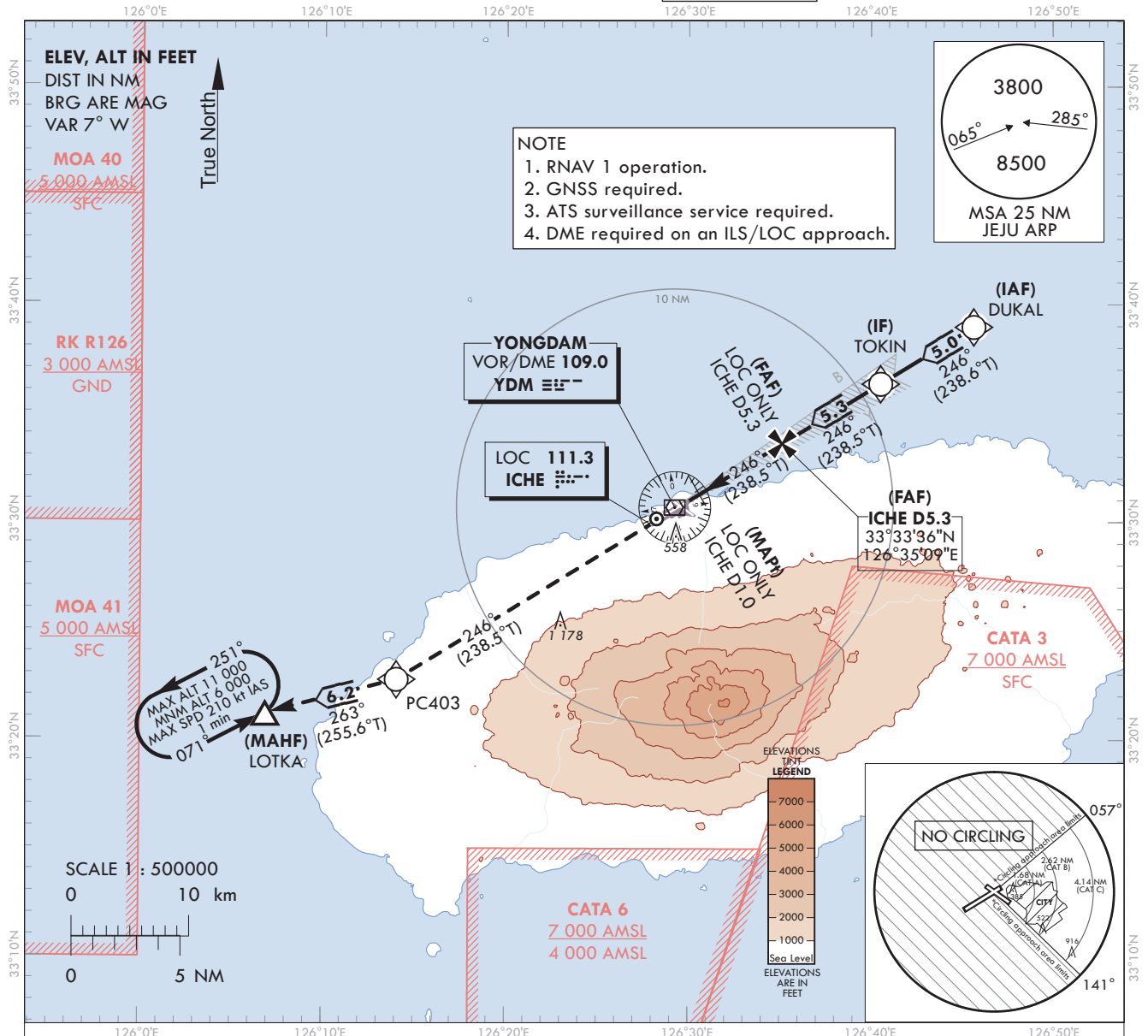
AERODROME ELEV 119 ft
HEIGHTS RELATED TO
THR RWY 25 - ELEV 76 ft

JEJU APP 121.2
124.05
JEJU TWR 118.55
118.2

JEJU/Jeju Intl(RKPC)

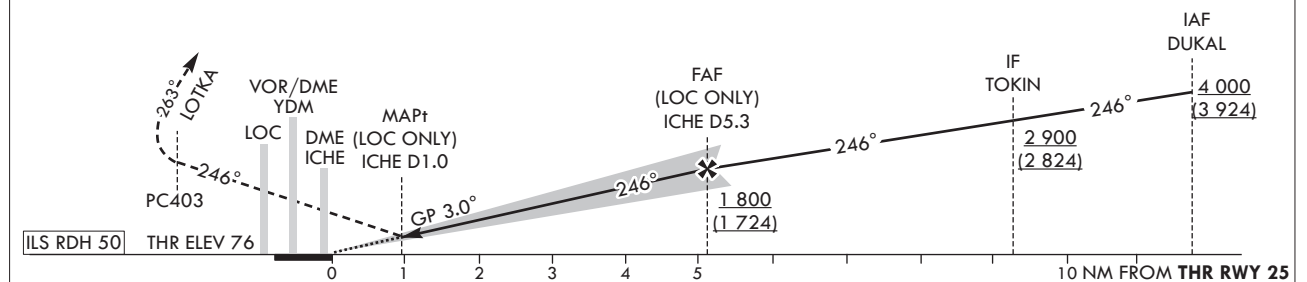
ILS Z or LOC Z RWY 25

Note : Approach under ICAO Flight Procedures.



RECOMMENDED PROFILE(LOC ONLY)		DME ICHÉ	5	4	3	2	1.0	MISSED APPROACH Climb to 6 000 ft on track of 246° to PC403, then RIGHT turn on track of 263° to LOTKA and Hold at 6000 ft.
Final Approach Gradient 5.32%, 323 ft/NM		ALT(HGT)	1 691 (1 615)	1 368 (1 292)	1 045 (969)	722 (646)	400 (324)	

TRANSITION ALT 14 000
TRANSITION LVL FL 140



CATEGORY			DA(DH)/ MDA(MDH)	A	B	C	D	DL							
STA	CAT-1	FULL	276	RVR 750 m, VIS 800 m					Rate of descent	Knots V/V fpm	60	90	120	150	180
		ALS INOP	(200)	1 200 m											
	LOC	FULL	450	1 300 m											
		ALS INOP	(374)	1 700 m											
Circling				680(561) 2 600 m	890(771) 3 600 m	1 380(1 261) 5 000 m	N/A		* Timing Not authorized for defining MAPt. * MDH for Circling related to aerodrome ELEV 119 ft.						

Change : Improved clarity such as terrain.

AERONAUTICAL DATA TABULATION

ILS Z or LOC Z Approach to RWY 25 from DUKAL(IAF)		
Fix/point		Coordinates
DUKAL(IAF)		33°38'58.6"N 126°45'38.8"E
TOKIN(IF)	BRG 246.03°/5.00 NM	33°36'21.9"N 126°40'32.2"E
D5.3 ICHE(FAF LOC only)	BRG 245.98°/5.34 NM ICHE	33°33'36.4"N 126°35'08.7"E
D1.0 ICHE(MAPt LOC only)	BRG 245.93°/1.00 NM ICHE	33°31'20.0"N 126°30'43.0"E
THR RWY 25		33°30'53.56"N 126°29'51.51"E
DME ICHE		33°30'51.4"N 126°29'39.1"E
PC403		33°22'44.4"N 126°14'03.0"E
LOTKA		33°21'11.1"N 126°06'52.2"E

**INSTRUMENT
APPROACH
CHART - ICAO**

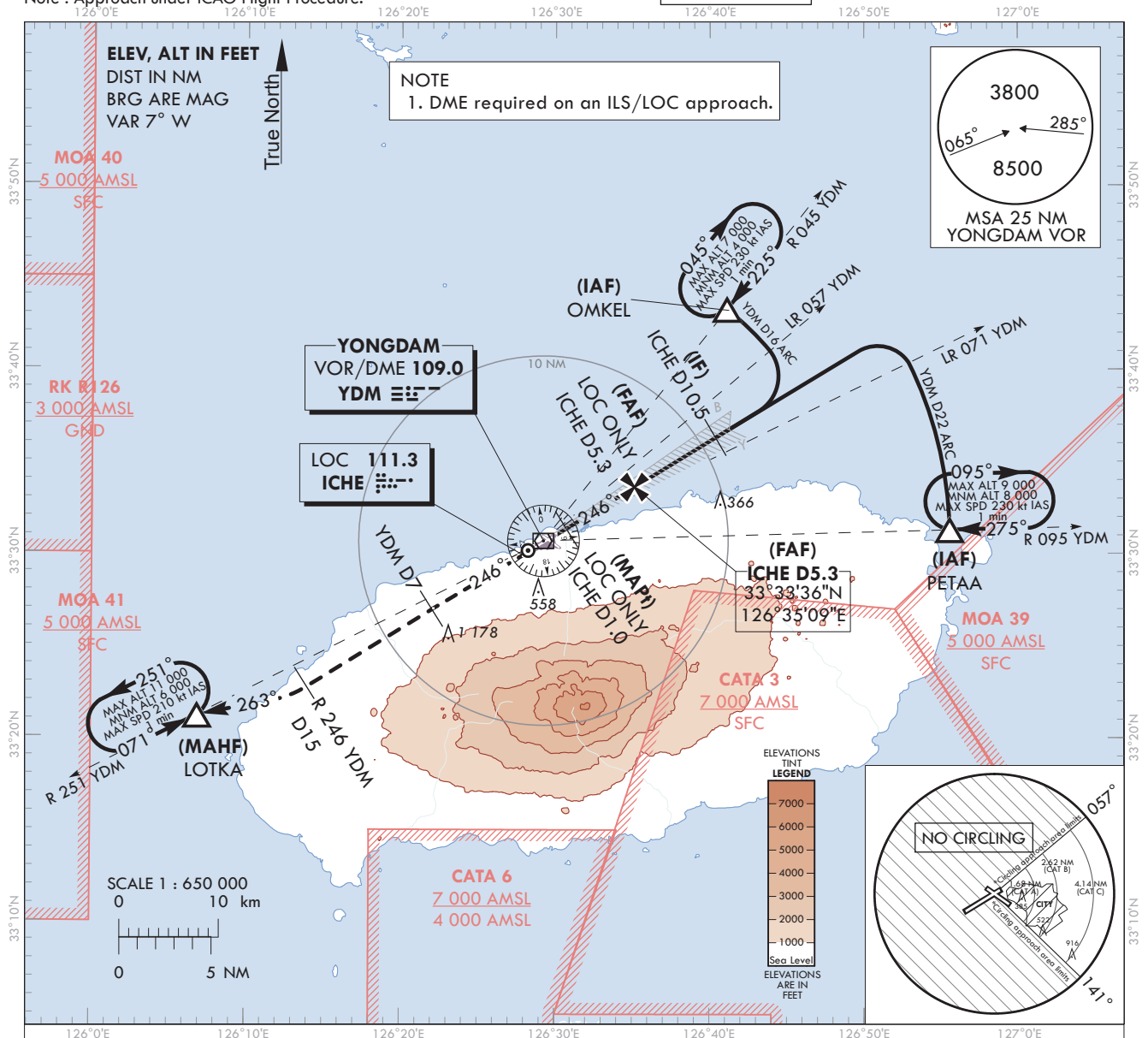
AERODROME ELEV 119 ft
HEIGHTS RELATED TO
THR RWY 25 - ELEV 76 ft

JEJU APP 121.2
JEJU TWR 124.05
JEJU TWR 118.55
118.2

JEJU/Jeju Intl(RKPC)

ILS Y or LOC Y RWY 25

Note : Approach under ICAO Flight Procedure.



RECOMMENDED PROFILE(LOC ONLY)	DME ICH	5	4	3	2	1.0
Final Approach Gradient 5.32%, 323 ft/NM	ALT(HGT)	1 691 (1 615)	1 368 (1 292)	1 045 (969)	722 (646)	400 (324)

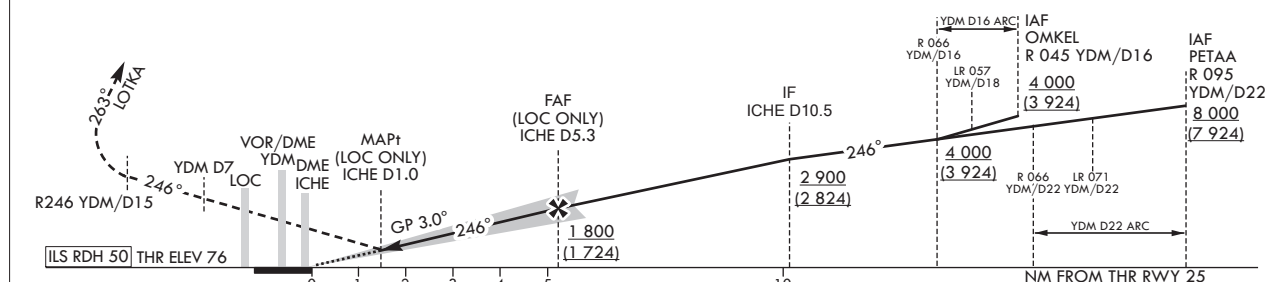
TRANSITION ALT 14 000
TRANSITION LVL FL 140

MISSED APPROACH

Climb straight ahead until YDM D7 to Intercept R 246 YDM/D15 turn RIGHT HDG 263° to LOTKA and Hold at 6 000 ft.

NOTE

1. Missed approach turn limited to maximum of 210 kt IAS.



CATEGORY			DA(DH)/ MDA(MDH)	A	B	C	D	DL
STA	CAT-1	FULL	276	RVR 750 m, VIS 800 m				
		ALS INOP	(200)					
	LOC	FULL	450	1 200 m				
		ALS INOP	(374)					
Circling				680(561) 2 600 m	890(771) 3 600 m	1 380(1 261) 5 000 m	N/A	

Rate of descent	Knots	60	90	120	150	180
V/V fpm		318	478	637	796	955

* Timing Not authorized for defining MAPt.

* MDH for Circling related to aerodrome ELEV 119 ft.

Change : Improved clarity such as terrain.

AERONAUTICAL DATA TABULATION

ILS Y or LOC Y Approach to RWY 25 from OMKEL(IAF) or PETAA(IAF)		
Fix/point		Coordinates
OMKEL(IAF)	- 16 DME ARC /16.00 NM YDM	33°43'16.2"N 126°41'08.0"E
PETAA(IAF)	- 22 DME ARC /22.00 NM YDM	33°31'18.0"N 126°55'34.0"E
D10.5 ICHE(IF)	- BRG 245.98°/10.50 NM ICHE	33°36'18.2"N 126°40'24.9"E
D5.3 ICHE(FAF LOC only)	- BRG 245.93°/5.34 NM ICHE	33°33'36.4"N 126°35'08.7"E
D1.0 ICHE(MAPt LOC only)	- BRG 245.93°/1.00 NM ICHE	33°31'20.0"N 126°30'43.0"E
THR RWY 25		33°30'53.56"N 126°29'51.51"E
DME ICHE		33°30'51.4"N 126°29'39.1"E
YDM VOR/DME		33°30'41.3"N 126°29'15.3"E
D7.0 YDM	- BRG 246.34°/7.00 NM YDM	33°26'59.7"N 126°22'08.6"E
D15.0 YDM	- BRG 245.59°/15.00 NM YDM	33°22'45.9"N 126°14'01.5"E
LOTKA	- BRG 262.70°/21.00 NM YDM	33°21'11.1"N 126°06'52.2"E

INSTRUMENT APPROACH CHART - ICAO

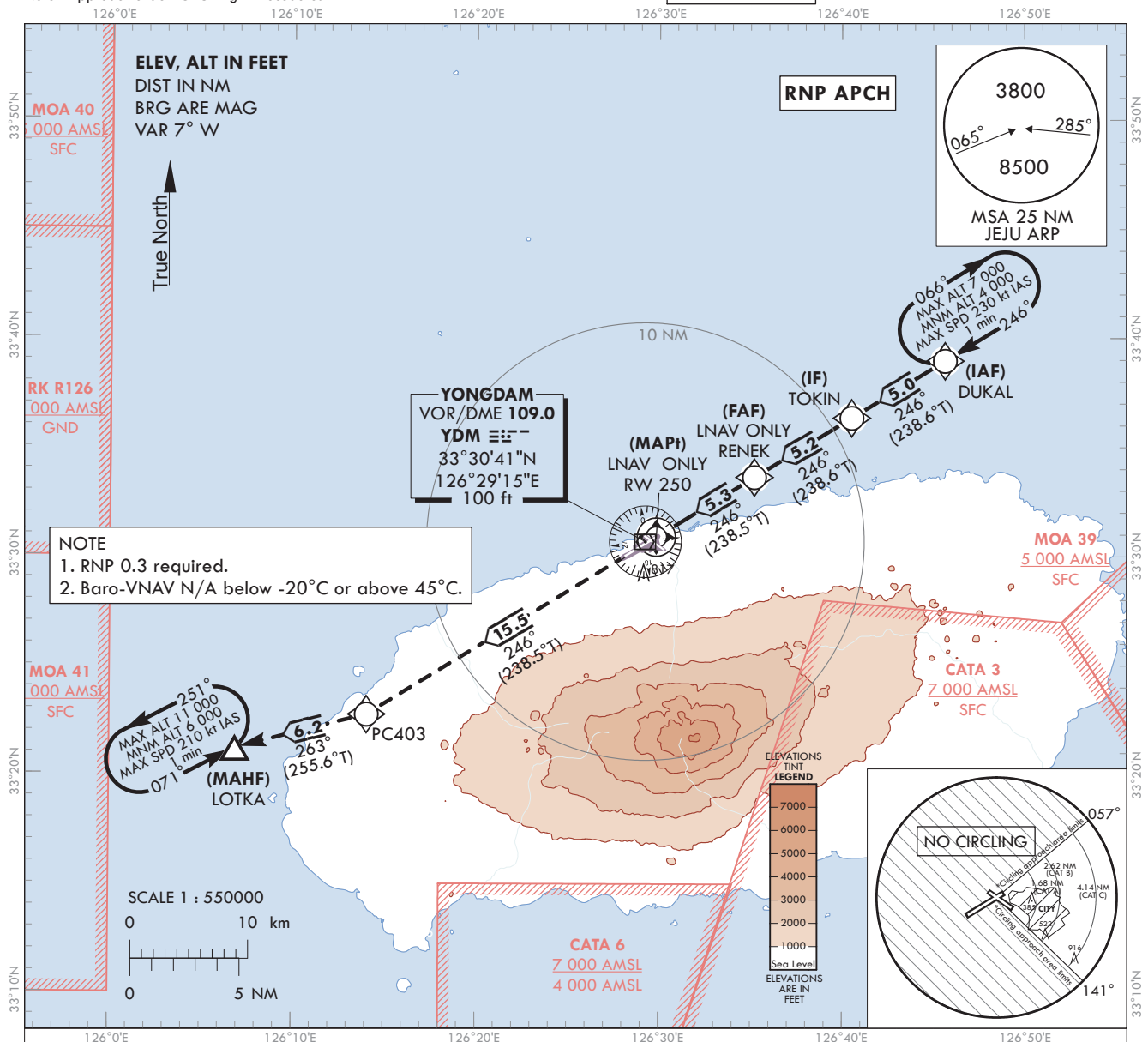
AERODROME ELEV 119 ft
HEIGHTS RELATED TO
THR RWY 25 - ELEV **76 ft**

JEJU	APP	121.2
		124.05
JEJU	TWR	118.55
		118.2

JEJU/Jeju Intl(RKPC)

RNP RWY 25

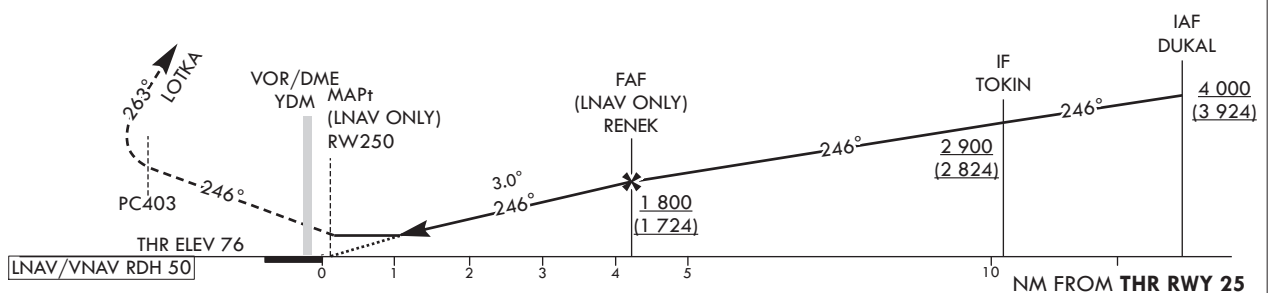
Note : Approach under ICAO Flight Procedures.



MISSED APPROACH

Climb to 6 000 ft on track of 246° to PC403, then RIGHT turn on track of 263° to LOTKA and hold at 6000 ft.

TRANSITION ALT	14 000
TRANSITION LVL	FL 140



CATEGORY			DA(H)/MDA(H)	A	B	C	D
STA	LNAV/VNAV	FULL	620	2 100 m			
		ALS INOP	(544)	2 500 m			
	LNAV	FULL	810	3 000 m			
		ALS INOP	(734)	3 400 m			
Circling				680(561) 2 600 m	890(771) 3 600 m	1 380(1 261) 5 000 m	N/A

Rate of descent	Knots V/V fpm	60	90	120	150	180
		319	478	637	797	956

* Timing Not authorized for defining MAPt.
 * MDH for Circling related to aerodrome ELEV 119 ft.

Change : Improved clarity such as terrain.

AERONAUTICAL DATA TABULATION

Instrument Approach Procedure Coding Tables

RNP RWY 25

Serial Number	Path Descriptor	Waypoint Identifier	Fly-over	Course/Track °M(T)	Distance (NM)	Turn direction	Altitude (ft)	Speed (kt)	Coordinates	VPA/TCH	Navigation specification	Remarks
001	IF	DUKAL	-	-	-	-	+4 000	-	33°38'58.6"N 126°45'38.8"E	-	RNP APCH	IAF
002	TF	TOKIN	-	246(238.6)	5.0	-	+2 900	-	33°36'21.9"N 126°40'32.2"E	-	RNP APCH	IF
003	TF	RENEK	-	246(238.6)	5.2	-	+1 800	-	33°33'38.6"N 126°35'13.1"E	-	RNP APCH	FAF
004	TF	RW250	Y	246(238.5)	5.3	-	+810	-	33°30'53.6"N 126°29'51.5"E	-3.00/50	RNP APCH	MAPt
005	TF	PC403	-	246(238.5)	15.5	-	-	-	33°22'44.4"N 126°14'03.0"E	-	RNP APCH	-
006	TF	LOTKA	Y	263(255.6)	6.2	-	-	-	33°21'11.1"N 126°06'52.2"E	-	RNP APCH	-
007	HM	LOTKA	Y	071(063.2)	-	L	-11 000 +6 000	-210	33°21'11.1"N 126°06'52.2"E	-	RNP APCH	1 min (Outbound timing)

HOLDING PROCEDURE

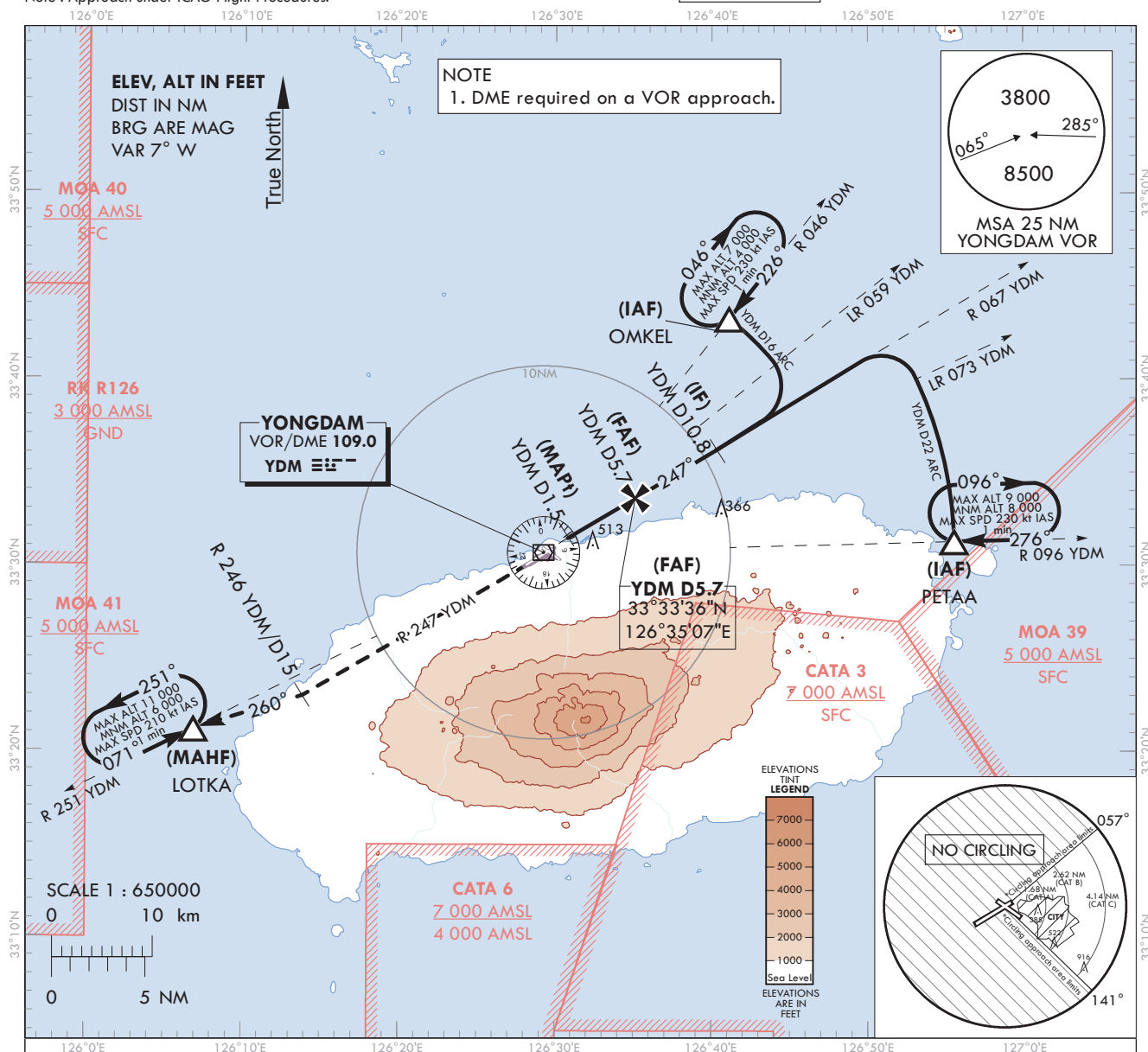
Serial Number	Path Descriptor	Waypoint Identifier	Fly-over	Course/Track °M(T)	TIME (min)	Turn direction	Altitude (ft)	Speed (kt)	Coordinates	VPA/TCH	Navigation specification	Remarks
RNP RWY 25	HM	DUKAL	Y	246(238.6)	1.0	R	-7 000 +4 000	-230	33°38'58.6"N 126°45'38.8"E	-	RNAV 1	-

AERODROME ELEV 119 ft
HEIGHTS RELATED TO
THR RWY 25 - ELEV **76 ft**

JEJU APP	121.2
	124.05
JEJU TWR	118.55
	118.2

VOR RWY 25

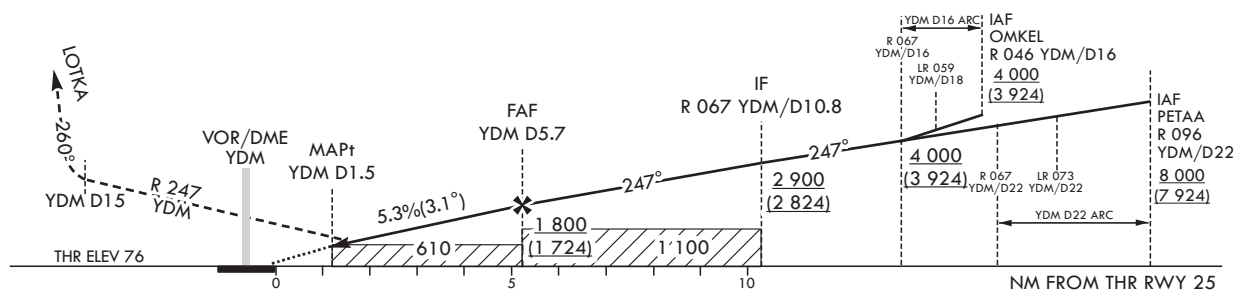
Note : Approach under ICAO Flight Procedures.



Climb on R 247 YDM until 15 DME, then turn Right HDG 260° to LOTKA and Hold at 6 000 ft.

RECOMMENDED PROFILE	DME YDM	5	4	3	2.2
Final Approach Gradient 5.34%, 325 ft/NM	ALT(HGT)	1 573 (1 497)	1 248 (1 172)	924 (848)	650 (574)

TRANSITION ALT	14 000
TRANSITION LVL	FL 140



CATEGORY		MDA(MDH)	A	B	C	D
STA	FULL	610 (534)	2 000 m			
	ALS INOP		2 400 m			
Circling			680 (561) 2 600 m	890 (771) 3 600 m	1 380 (1 261) 5 000 m	N/A

* Timing Not authorized for defining MAPt.
* MDH for Circling related to aerodrome
ELEV 119 ft.

Change : Improved clarity such as terrain.

JEJU/Intl(RKPC)
VOR RWY 25

AERONAUTICAL DATA TABULATION

VOR Approach to RWY 25 from OMKEL(IAF) or PETAA(IAF)		
Fix/point		Coordinates
OMKEL(IAF)	- 16 DME ARC/16.00 NM YDM	33°43'16.2"N 126°41'08.0"E
PETAA(IAF)	- 22 DME ARC/22.00 NM YDM	33°31'18.0"N 126°55'34.0"E
D10.8 YDM(IF)	- BRG 246.76°/10.80 NM YDM	33°36'12.8"N 126°40'22.1"E
D5.7 YDM(FAF)	- BRG 246.76°/5.70 NM YDM	33°33'36.4"N 126°35'07.1"E
D1.5 YDM(MAPt)	- BRG 246.71°/1.50 NM YDM	33°31'27.2"N 126°30'47.4"E
THR RWY 25	Final approach descent angle 3.06°	33°30'53.56"N 126°29'51.51"E
YDM VOR/DME		33°30'41.3"N 126°29'15.3"E
D15.0 YDM	- BRG 246.67°/15.00 NM YDM	33°22'59.4"N 126°13'51.7"E
LOTKA	- BRG 260.35°/21.00 NM YDM	33°21'11.1"N 126°06'52.2"E